

## CATALOGUE

Friends of interpretable spaces, St Augustine's Tower, Hackney. 6-14<sup>th</sup> October 2018.



**Jeannette Abi Khalil**, *Interpreters of the Friends of interpretable spaces*  
Work exposing and merging the hidden multi-layered space of past, present and future time.



**death+glitter**  
*space for sale*  
Playful intervention intended to provoke public reaction to the prospect of losing a familiar, historical feature of Hackney.



**Rachel Glass**  
*Abstract negotiations of intimacy*  
Photographs investigating the place of touch in creating emotional bonds with the world.



**Esperanza Gomez Carrera**  
*The watchful stones*  
Playful installation on the "watchful" stones of the Tower that have witnessed centuries.



**Jacqui Grant**  
*Keep out, granny pants, chastity belt*  
Work using underwear to challenge the transgression of women's personal space.



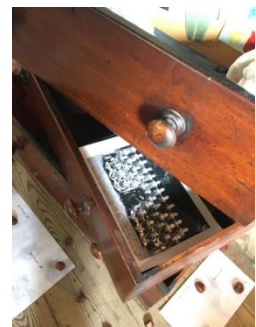
**Tom Hackett**  
*The wrong St Augustine's*  
Text based installation reflecting on another St Augustine's church in another time and place.



**Lisa Kreuziger**  
*Amygdala*  
Textual intervention inspired by Kafka's "The Metamorphosis" focusing on the inner space of the human imagination.



**Jill Laudet**  
*Reclaim public space*  
Colourful fabric banners drawing attention to potential of public spaces for collective action.



**Andy Metcalf**  
*Space of boyhood*  
Work reflecting on masculinity and emotional impoverishment in the space of boyhood.

## CATALOGUE

Friends of interpretable spaces, St Augustine's Tower, Hackney. 6-14<sup>th</sup> October 2018.



### Marta Pieregoczuk

#### *Marching in one cause*

Political space created using 20 original Anti Trump posters with portraits of protestors carrying them.



### Henry Rusted

#### *Realtime*

A sound installation zooming in acoustically on the Tower's centuries old clockwork mechanism.



### Louise Scillitoe-Brown

#### *Insignia*

Flags updating the original coat of arms of St Augustine's Tower within the contemporary context.



### Paralax project

#### *Ascension*

An itinerary through the artworks encouraging visitors to experiment with new physical postures and perceptions.



### Henryk Terpilowski

#### *An interpretable barrier*

Installation using orange plastic boundary fencing to investigate the role of boundaries in space.



### Mále Uribe Forés

#### *Surface memories*

Work exploring memories of the artist's childhood home focusing on its material surfaces.



### Anna Vauhkonen

#### *Sacred space*

Soundscape based on the idea of the body as a sacred space, referencing the Tower's original eight bells.



### Satu Viljanen

#### *Ultimate comfort*

Soft sculpture exploring the tension between objects and voids, and the spaces people find safe.



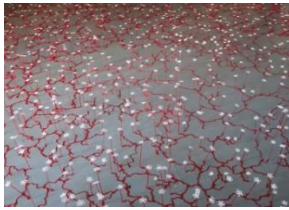
### Eileen White & Belinda Mitchell

#### *Matter of the manor*

Installation with artist book conceptualising historic interiors as unfinished sites of experience.

## CATALOGUE

Friends of interpretable spaces, St Augustine's Tower, Hackney. 6-14<sup>th</sup> October 2018.



### Joanna Sperryn-Jones

#### *Selfscapes*

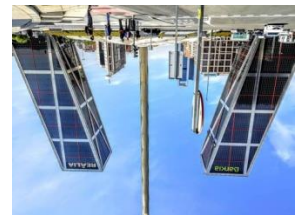
Work that challenges people's anthropocentric view of the environment and the way they experience nature and plant life.



### Liz Brown

#### *DNA of the Friends at interpretable spaces*

Contemporaneous photographic response by the artist to artworks and performances over the course of the Friends of interpretable spaces exhibition.



### Iggy Crespop

#### *Architectural icons in decayed societies*

Images and texts highlighting the incongruence between architectural icons and their decayed social context.

## Performers & activated works



### Keanu Arcadio

#### *APOLL-DION*

Bodily actions sampled from sculptural compositions of Rodin & Henry Moore in the format of Apollonian and Dionysian spirits. [Image © Carlos Reinoso](#)

**Sat 13<sup>th</sup>, 5-6pm**



### Rachel Glass

#### *Abstract negotiations of intimacy*

Invitation to work with a "touch facilitator" to explore what it means to engage in platonic and wanted touch and what it means for this to be organic.

**Sat 6<sup>th</sup> & Wed 10<sup>th</sup>, 6-8pm**



### Christina Lovey

#### *The sea within*

Performance inspired by the Icelandic notion of *Innsea*: intuition/empathy/perceptual awareness, responding to the location of the Tower and the sensation of moving through the 5 floors.

**Everyday at 2pm, 3pm, 4pm. Also between 6-8pm on Sat 6<sup>th</sup> and Wed 10<sup>th</sup>.**



### Paralax Project

#### *Ascension: a journey of fragrance*

An aromatic journey through the Tower gathering fragrant ingredients, using postures and movements that challenge the body, ending with a bespoke infusion made on the Tower roof.

**Wed 10<sup>th</sup>, 1-8pm**

## CATALOGUE

Friends of interpretable spaces, St Augustine's Tower, Hackney. 6-14<sup>th</sup> October 2018.



### **Billie Penfold & Sonia Overall**

#### *Threading and treading the labyrinth at St Augustine's Tower*

Creating a labyrinth within the outline of the vanished St Augustine's Church as a temporary, sacred terrain designed to coax our inner knowing from within. Then walking the Labyrinth and documenting by knotting hand-made ropes.

**Sun 7<sup>th</sup>, 1-6pm**



### **Henry Rusted**

#### *Realtime*

Work orchestrating a duet between the Tower's ancient clock & the visitor's timepiece.

**Sat 6<sup>th</sup>, 1-8pm; Sat 13<sup>th</sup> 1-6pm.**



### **Joanna Sperryn-Jones**

#### *Selfscapes*

Interactive work challenging how we experience natural settings and plant life through enticing visitors to negotiate the space of the work and to end up breaking it.

**Sat 13<sup>th</sup>, 1-6pm**



### **Anna Vauhkonen**

#### *Sacred space*

Ritualistic performance inspired by the original eight bells of the old St Augustine's church coinciding with opening and closing times of the exhibition.

**Sat 6<sup>th</sup> and Wed 10<sup>th</sup>, 12.45 & 7.45pm**



### **Eileen White and Belinda Mitchell**

Live event that involves adding to an original artist book based on a 16th Century timber-framed manor house.

**Sat 13<sup>th</sup> 1-6pm**